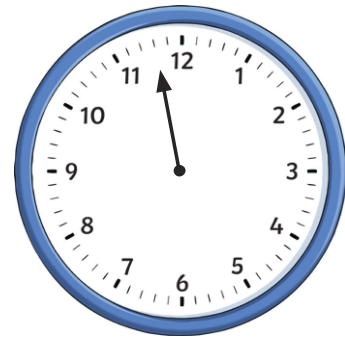


- 1) a) The clock face has lost its hour hand. What time could it be? Explain your answer.



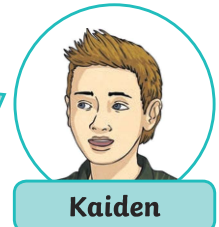
- b) Find all the possible answers.

- 2) Two friends draw fourteen minutes to 10 on an analogue clock.



The minute hand is closer to 12 than the hour hand.

The hour hand is closer to 12 than the minute hand.



Which of the two friends do you agree with? Explain fully.

- 3) Emily and James are practising for a school music concert.

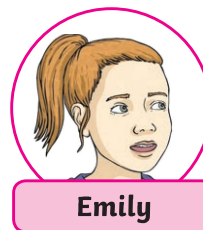
Emily practises for 17 minutes and starts at five past 1.

James practices for 26 minutes and starts at four minutes to 1.

- a) At what time does each child finish?

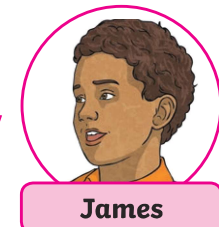
Emily

James



I started practising later so I will finish later than you.

I practised for longer so I will finish later than you.



James

- b) Who is correct? Explain your answer fully.