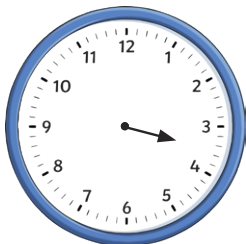


- 1) The clock face has lost its minute hand. What time could it be? Explain your answer.



---

---

---

- 2) Two friends draw 20 minutes to 7 on an analogue clock that uses Roman numerals.



Sunni

The minute hand will be on VII.

Jenson



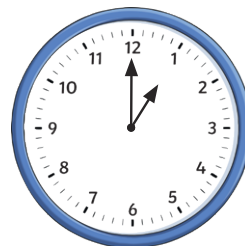
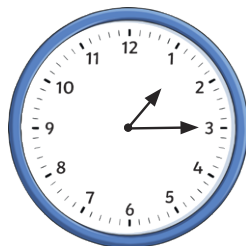
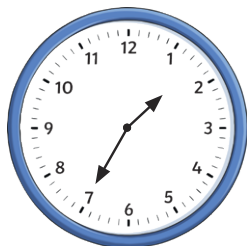
The minute hand will be on VIII.

Which of the two friends do you agree with? Explain fully.

---

---

- 3) Year 3 went to the theatre. The show started at 20 past 1.



- a) Which of the clock faces show the latest time that year 3 could have sat in their seats, without missing any of the show. Explain fully.

---

---

- b) If year 3 sat in their seats at the time shown on the first clock, would they have been early or late? Explain your answer.

---

---

- 4) What times between 7 o'clock and 9 o'clock can you find where the minute hand points to a multiple of 3? Explore.